

MP10 CN 4H



Macchina perforatrice a controllo numerico

N.4 Teste di perforazione con asse di rotazione
700 colpi al minuto
Area di lavoro 600 x 500
Spessore materiale da 1 a 6 mm.
Kit completo di fustelle incluso
N.2 telai quick-lock in resina
Aspiratore scarti
Computer incluso
Software - interfaccia di controllo
Software utilizzabili: Corel Draw e Autocad



Caratteristiche Tecniche

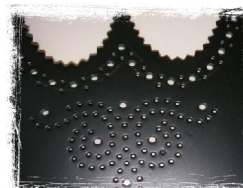
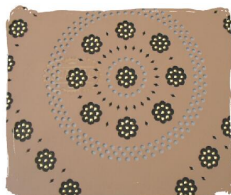
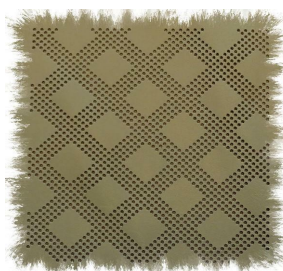
Potenza massima assorbita 2,5 kW
Alimentazione elettrica monofase 230 V 50/60 Hz

MP10 CN 4H



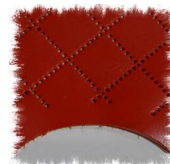
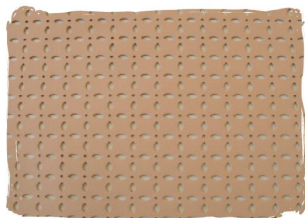
Perforating Numerical Control Machine

N.4 Heads with rotation axis
700 holes minute
Working size 600 x 500 mm.
Material thickness from 1 to 6 mm.
Complete set of toolings included
N.2 quick-lock frames in resin
Waste exhauster
Computer Windows included
Control-interface software
Corel Draw and Autocad useful software



Technical Data

Absorbed power max 2,5 kW
Power supply single-phase 230 V 50/60 Hz



Tavolo computer non incluso
Computer's table not included

Le caratteristiche tecniche sono indicative e non vincolanti
The Technical Data are indicative and not binding



SAGITTA
Officina Meccanica SpA
Corso Novara 163
27029 Vigevano (PV)
Italy

Phone +39 0381 75701 / +39 0381 75702
Fax +39 0381 82771
info@sagitta.it
www.sagitta.it